

TEKFALT

IS A BRAND OF MARINI MAKINA A.S.

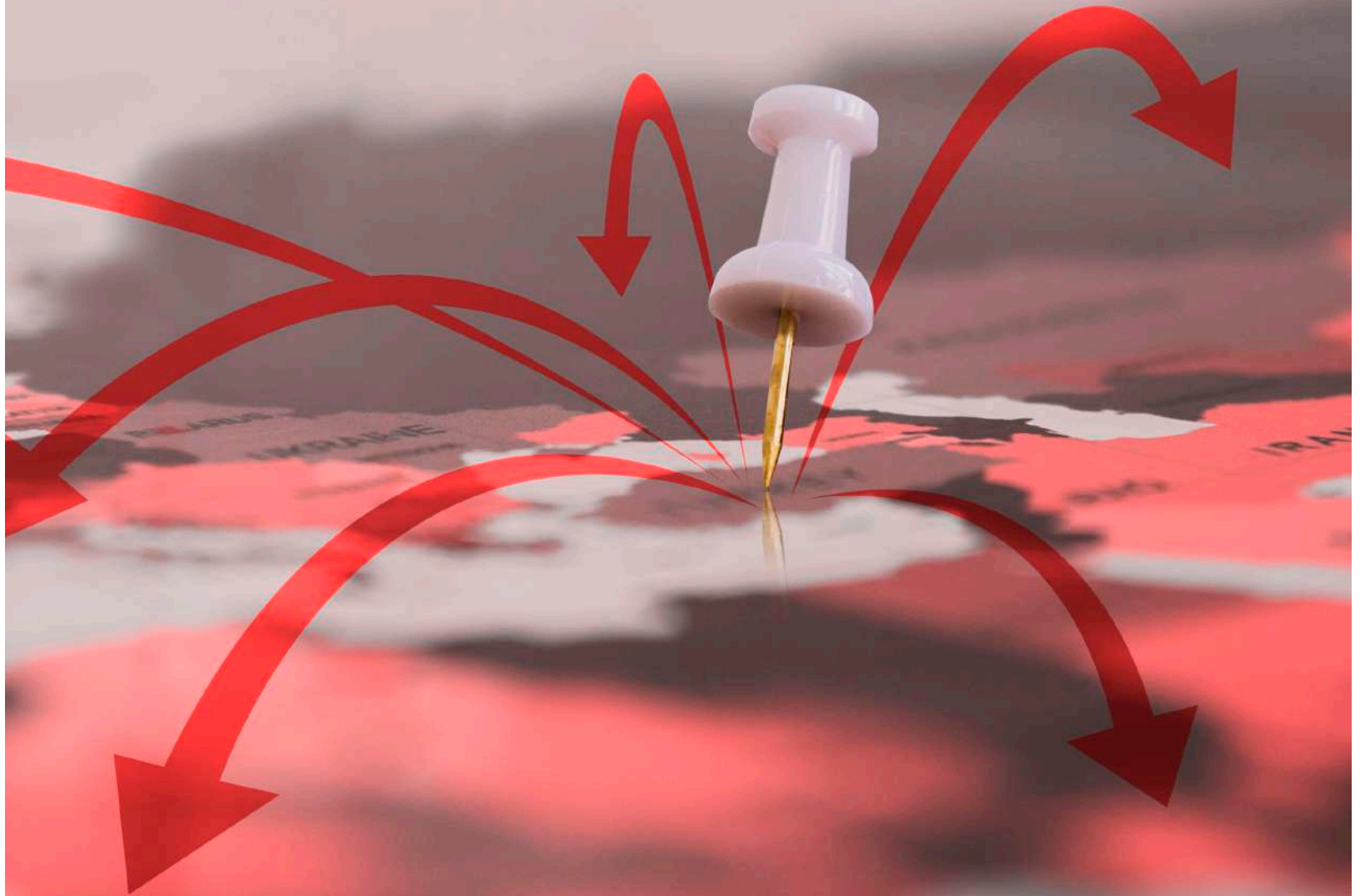
PRODUCT CATALOGUE



INTRODUCTION

◆ MARINI MAKİNA A.Ş.	04
◆ Polymer Modified Bitumen (PMB) Plant - modiFALT	06
◆ Bitumen Emulsion Plant - emulFALT	08
◆ Cold / Wet Mix Plant - coldFALT	10
◆ Tanks, Piping and Bitumen Handling Systems - tankFALT	12
◆ PE & PMB Mixing Systems (Low Shear) - mixFALT	14
◆ Thermal Oil Heater - heatFALT	15
◆ Drum Melting Unit - drumFALT	16
◆ Fiber Dosing System - fiberFALT	17
◆ Mobile Bitumen Park & Tank - mobilFALT	18
◆ Big-Bag Melting Unit - bagFALT	19
◆ Sprayer Tanker - sprayFALT	20
◆ Binding Agent Spreader - basFALT	21
◆ Bitumen Relay Tanker - transfALT	22
◆ Crack Repair Compound Boiler - crackFALT	23
◆ Asphalt Maintenance Vehicle - patchFALT	24
◆ Combi Asphalt Machine - combiFALT	25
◆ After Sales Services	26
◆ Export Network	28

“from TURKEY
to the WORLD”



MARINI MAKİNA A.Ş.





Our company was founded under the name of “TEKFALT” in January 2009 in order to provide road construction machinery design, production, consultancy, after-sales support, and spare part services. In a short time, it has become well known in both domestic and foreign markets thanks to our entrepreneurial and experienced team. After very successful initiation years, TEKFALT has become partners with Marini S.p.A. and joined FAYAT GROUP family. Therefore, the name of the company changed to MARINI MAKİNA A.Ş.

This successful cooperation that we gained constitutes the basis for our robust organizational structure and sustainable growth while we take stronger and more confident steps in the global market by increasing production diversity and quality. At this point, it is essential to respond quickly and accurately to increasing demands and to keep customer satisfaction at the top level. The name of TEKFALT, however, is protected as a brand of MARINI MAKİNA A.Ş. and the products of this group continue to be produced with high quality and reasonable cost.



We, as MARINI MAKİNA A.Ş., continue to serve best quality and customer oriented service to our clients with more than 200 employees in our factory that has 25.000m² total area in which 13.450m² is under cover.

- ◆ 13.450m² Total Closed Area.
- ◆ 25.000m² Total Area.
- ◆ 2.000m² Closed Stock Area.
- ◆ More Than 200 Employees.

modiFALT

Polymer Modified Bitumen (PMB) Plants

MARINI modiFALT Polymer Modified Bitumen Plant (PMB) is the ideal solution for all road projects with its high mill performance, compact design, ease of use and economic operation features. With its high production capacity, modiFALT can meet the needs of all road, railway, airport projects and special applications which requires modified bitumen usage.



modiFALT40

Up to 40 t/h, thermal oil heated, works with 2 automatic polymer dosing systems, Transportation with 1x40' Flat Rack and 1x40' Open Top containers or 2 standard trailer.

40 t/h

modiFALT30

Up to 30 t/h, thermal oil heated, works with 2 automatic polymer dosing systems, Transportation with 2x40' Open Top containers or 2 standard trailer.

30 t/h

modiFALT20

Up to 20 t/h, thermal oil heated, works with 1 manual polymer dosing systems, Transportation with 1x40' Flat Rack container or 1 standard trailer.

20 t/h

modiFALT15

Up to 15 t/h, thermal oil heated, works with 1 manual polymer dosing systems, Transportation with 1x40' Open Top container or 1 standard trailer.

15 t/h

e-modiFALT20

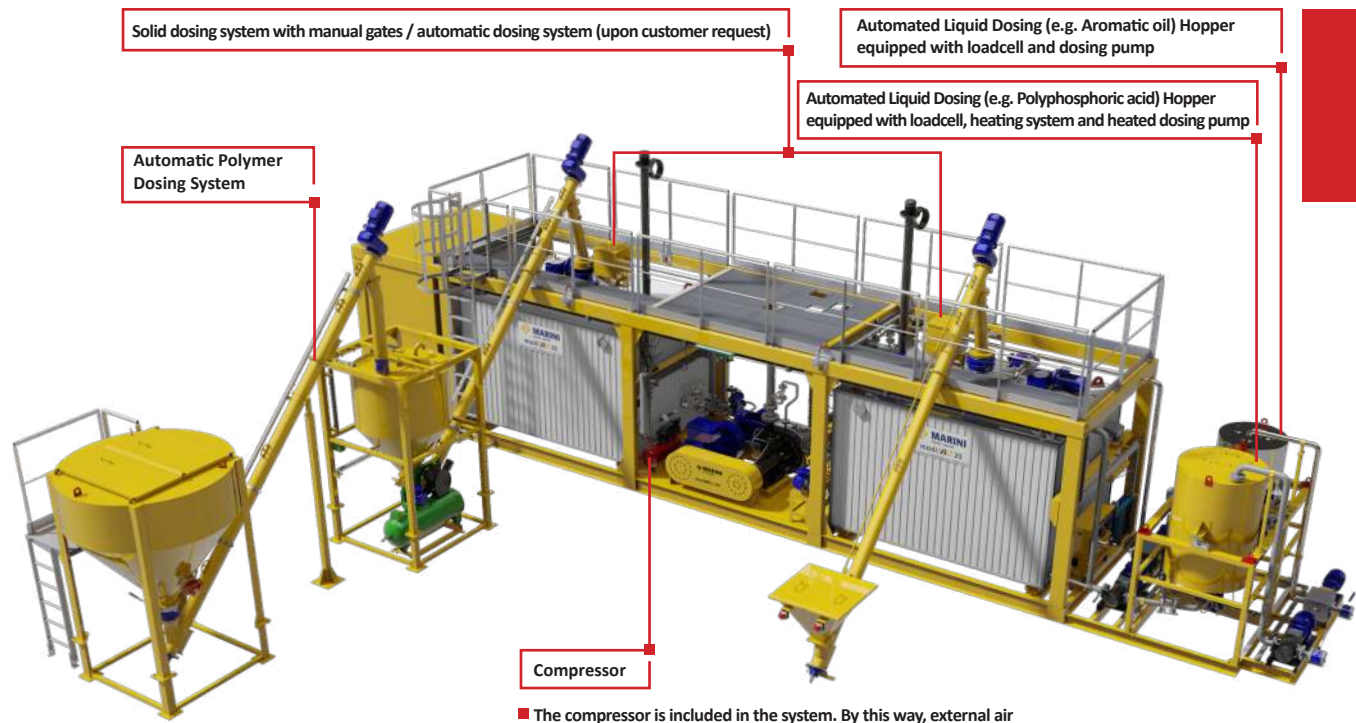
Up to 20 t/h, electrical heating, works with 1 manual polymer dosing systems, Transportation with 1x40' Flat Rack container or 1 standard trailer.

20 t/h

e-modiFALT15

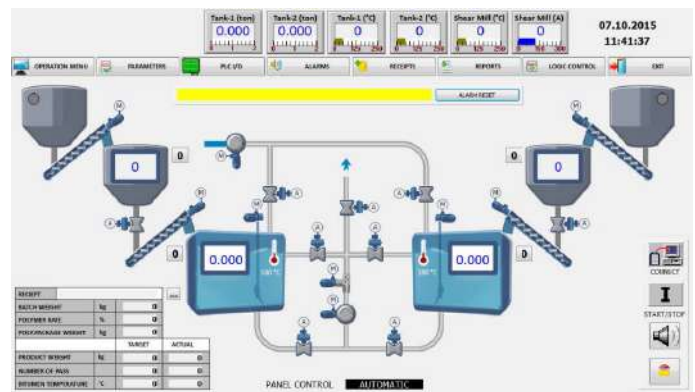
Up to 15 t/h, electrical heating, works with 1 manual polymer dosing systems, Transportation with 1x40' Open Top container or 1 standard trailer.

15 t/h



■ The compressor is included in the system. By this way, external air supply is not required.

Compressor capacity/type may vary according to the configuration of the PMB plant and environmental conditions.



- ◆ modiFALT plants are specially designed for modification of bitumen (PMB) with granule polymer additives (SBS) and can meet all high capacity requirements of road construction and airport projects.
- ◆ Additionally, other types of bitumen modifiers such as EVA, crumb rubber etc. can be easily used for bitumen modification.
- ◆ modiFALT's specially designed 160kW high shear mill is developed by the MARINI MAKİNA engineers for the best working performance with granule polymer types (e.g. SBS) and it ensures polymer modification with less than <0,3mm grain size in one pass.
- ◆ Long term and problem free working time thanks to the mill seal cooling system.
- ◆ Two tanks both equipped with twin agitators configuration ensures flexible batching process from 500kg to 5 ton at desired number of pass.

- ◆ Precision weighing with loadcell integrated process tanks and strong blending with 2 pieces of 7,5kW agitator on each processing tank.
- ◆ A design that prevents agglomeration of the polymer particles thanks to thermal oil heating coils that surrounding the process tanks from sides and bottom.
- ◆ Optional; automatic polymer dosing system.
- ◆ Optional; manual or automatic dosing system for solid (ex. Sulfur powder) and liquid (ex. PPA) additives.
- ◆ Fully automatic control system with PLC + SCADA and computer controlled system.
- ◆ Trouble-free international transportation and assembly thanks to its standard dimensions.

emulFALT

Bitumen Emulsion Plant

MARINI emulFALT is the reliable, highly efficient, compact, easy to use, economic bitumen emulsion plant which is engineered for bitumen emulsion production for all road construction projects, asphalt applications and other special applications.



emulFALT15

Up to 15 t/h, thermal oil heated,
Transportation with 1x20' Open Top containers or
1 standard trailer.

15 t/h

e-emulFALT15

Up to 15 t/h, electrical heating,
Transportation with 1x20' Open Top containers or
1 standard trailer.

15 t/h

emulFALT6

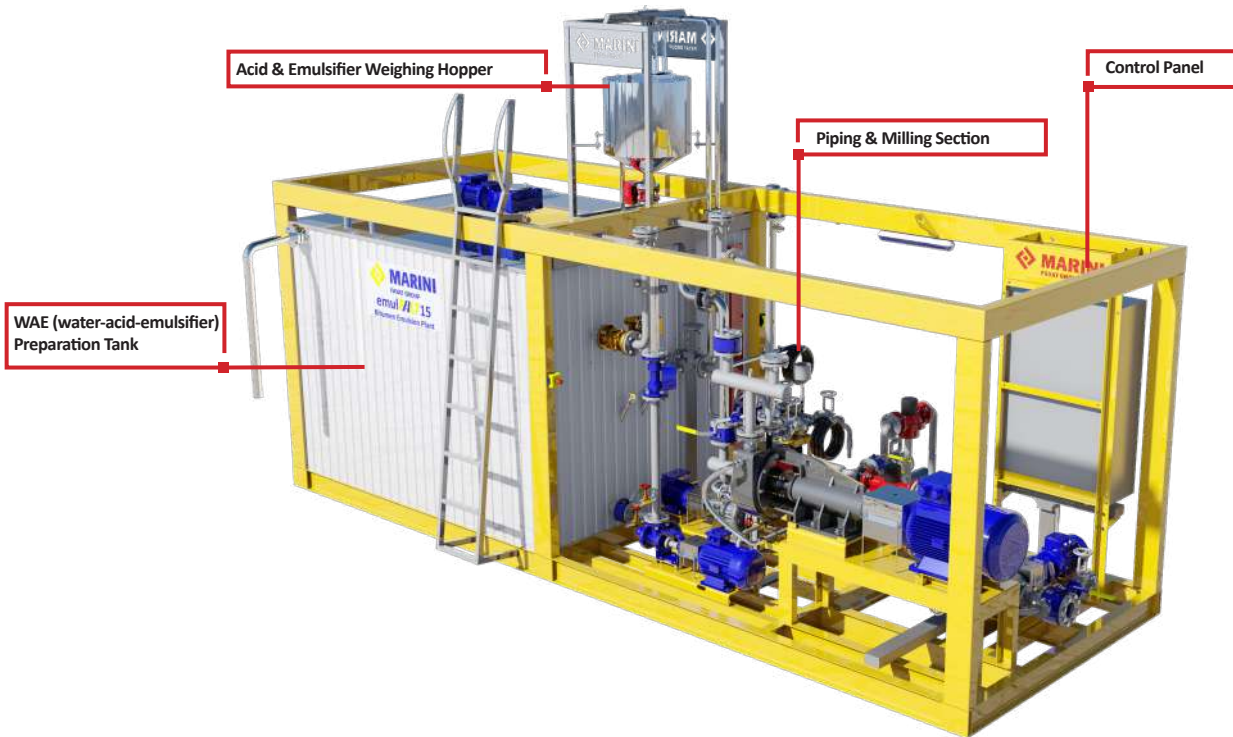
Up to 6 t/h, thermal oil heated,
Transportation with 1x20' Open Top containers or
1 standard trailer.

6 t/h

e-emulFALT6

Up to 6 t/h, electrical heating,
Transportation with 1x20' Open Top containers or
1 standard trailer.

6 t/h

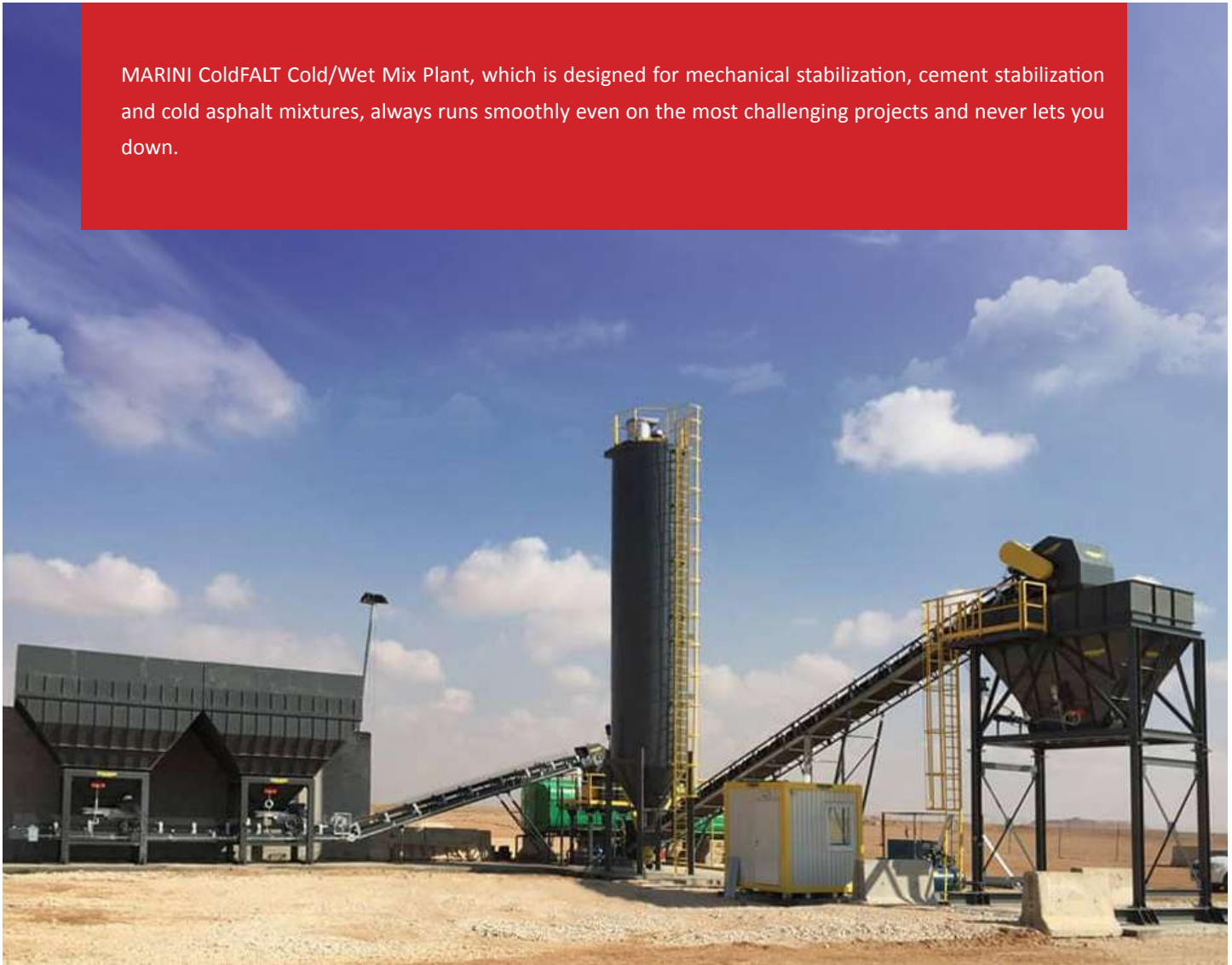


- ◆ Designed and produced by MARINI MAKİNA, emulFALT's colloid mill guarantees perfect results that can provide preferred particle size by adjustable gap setting between rotor/stator discs for all types of bitumen emulsions (even with low PEN bitumen or modified bitumen).
- ◆ Divided inlet for WAE and bitumen at the colloid mill in order to prevent foaming and ensure perfect particle size.
- ◆ Reliable and controlled production with thermal oil or electrically heated mill, inverter controlled bitumen and WAE pump, flowmeters, valves and piping.
- ◆ Trouble-free and precise production with robust plant structure equipped with stainless steel water-acid-emulsifier (WAE) tank and acid-emulsifier weighing hopper on loadcells, thermostatic controlled stainless steel heating coils.
- ◆ 316L stainless steel gear type positive displacement water-acid-emulsifier (WAE) pump and flowmeter, both are suitable for working with acidic and basic liquids.
- ◆ Ease of operation by accurate continuous control via bitumen, WAE and kerosene flowmeters in accordance with receipt-based manufacturing.
- ◆ Container type compact design for easy transportation and installation.
- ◆ Optional; Bitumen Flowmeter can be added to the mill's bitumen feeding line.
- ◆ Optional; kerosene dosing system consists of a gear type kerosene pump with ex-proof electric motor including flowmeter and specially designed static mixer for premixing in order to reach desired dosing quality.
- ◆ Optional; latex dosing system and optional heat exchanger for modified bitumen emulsion applications.
- ◆ Optional; integrated bitumen tank (IBT) for special bitumen processes and flexible production opportunities for various project needs.
- ◆ Optional; twin WAE tanks to enable capacity increase by continuous production.
- ◆ Optional; PLC & SCADA control system with embedded touch screen computer on the control panel or control cabin option with PC.

coldFALT

Cold/Wet Mix Plant

MARINI ColdFALT Cold/Wet Mix Plant, which is designed for mechanical stabilization, cement stabilization and cold asphalt mixtures, always runs smoothly even on the most challenging projects and never lets you down.



coldFALT800

Mechanical stabilization (water + aggregate), cement stabilization (water + aggregate + cement) and cold mix asphalt (emulsion + aggregate + water, cement, recycled asphalt on demand). Transport via standard trailer, the number of vehicles varies according to configuration.

800 t/h

coldFALT600

Mechanical stabilization (water + aggregate), cement stabilization (water + aggregate + cement) and cold mix asphalt (emulsion + aggregate + water, cement, recycled asphalt on demand). Transport via standard trailer, the number of vehicles varies according to configuration.

600 t/h

coldFALT400

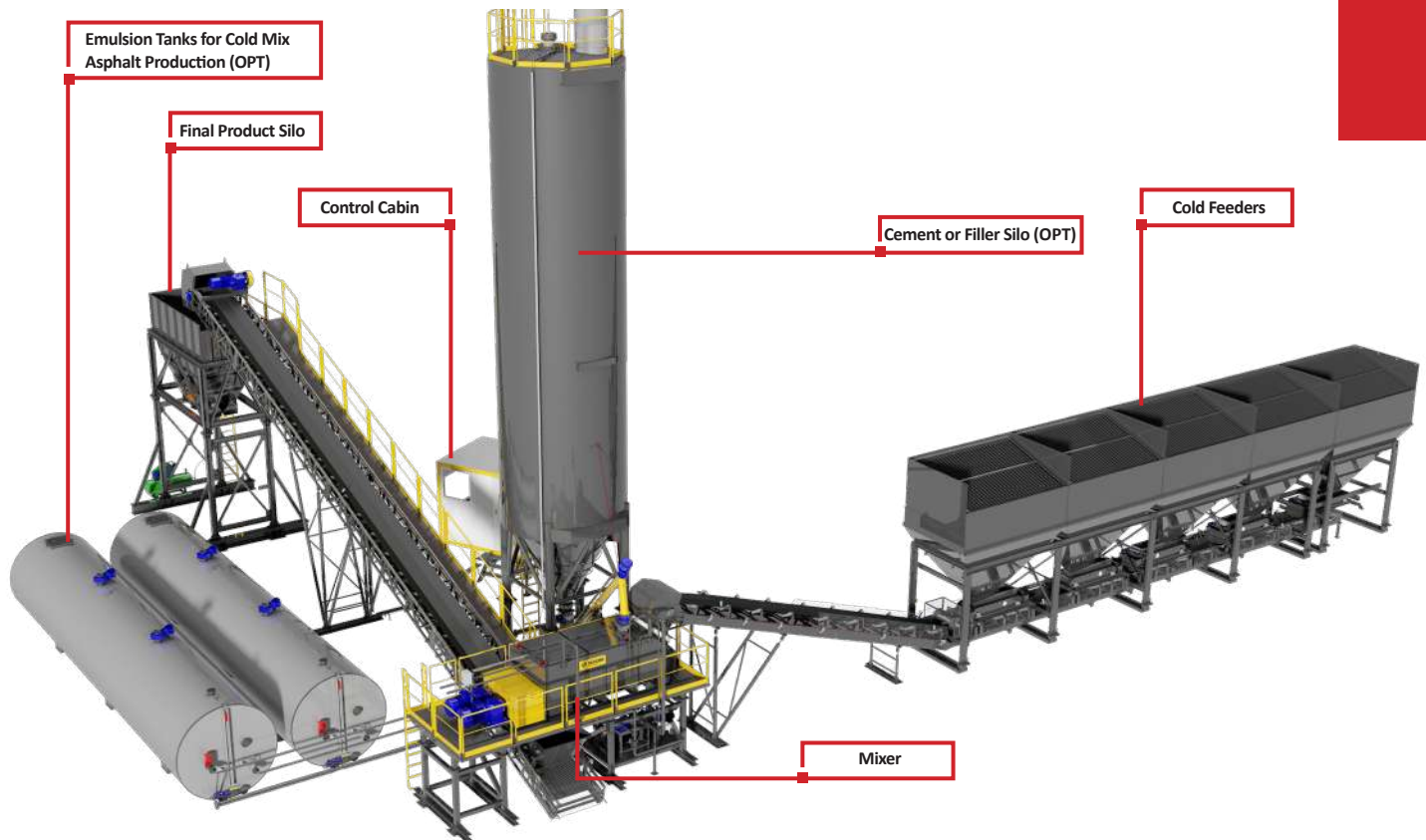
Mechanical stabilization (water + aggregate), cement stabilization (water + aggregate + cement) and cold mix asphalt (emulsion + aggregate + water, cement, recycled asphalt on demand). Transport via standard trailer or 40' Open Top container, number of vehicles/containers varies according to configuration.

400 t/h


coldFALT200

Mechanical stabilization (water + aggregate), cement stabilization (water + aggregate + cement) and cold mix asphalt (emulsion + aggregate + water, cement, recycled asphalt on demand). Transport via standard trailer or 40' Open Top container, number of vehicles/containers varies according to configuration.

200 t/h



- ◆ Diversification of plants at different capacities in the range of 200-800 t/h, in order to respond to different needs of road, railway, airport projects.
- ◆ Fully controlled production of mechanical stabilization, cement stabilization and cold asphalt mixtures in excellent quality.
- ◆ Specially designed twin shaft mixer for perfect mixing quality
- ◆ Cold mix plants have been designed for various production of homogeneous cold/wet mixes with aggregate, water, cement, reclaimed asphalt, bitumen emulsion, foam bitumen.
- ◆ Thanks to standard production of coldFALT's mixer, its arms, paddles, body parts with bolted anti-wear components and wear parts are very easy to replace and we can provide continuous spare part support.

- ◆ Dosing belt flow sensors stop the system automatically when aggregate feeding is interrupted.
- ◆ Capacity of dosing belts, ratio of cement, bitumen emulsion and foam bitumen in the mix can be adjusted from control cabin via frequency converter.
- ◆ Fully automatic control of production with optional PLC + computer control system, which also allows storage and reporting of all production data.
- ◆ Compact design fits into 40' Open Top container (plants with 200 and 400 t/h capacity) which provides easy and economic transportation 

tankFALT

Tank, Piping and Bitumen Handling System

MARINI tankFALT Tank, Piping and Insulation Systems are the most suitable equipment for all kinds of stock and service applications with their fast heating, high effectiveness, economic operation and quality workmanship.

Tanks, in which bitumen, PMB, emulsion, fuel oil, diesel and other similar materials are stored, can be produced at desired capacities in compliance with your project needs.

These tanks are flexible, high quality and long lasting in terms of heating coils, insulation and similar properties. Additionally, we can respond to your high capacity bitumen stock requirements with large stock tanks (more than 2000m³) and bitumen pools manufactured on site.



TYPE	CAPACITY -TRANSPORTATION	HEATING
Horizontal Tanks	38m ³ - 40' Standart Container 50m ³ - Standart Trailer 100m ³ - Mega Tailer	Thermal Oil or Electrical Heating
Vertical Tanks	50m ³ - Standart Trailer 60m ³ - Standart Trailer 80m ³ - Mega Tailer	Thermal Oil or Electrical Heating



- ◆ Horizontal or vertical, electrically or thermal oil heated designs and production according to your needs.
- ◆ Horizontal or vertical tanks can be equipped with agitators according to project needs.
- ◆ Pressure and leakage tests are applied to each tank produced and the required quality documentation is available
- ◆ Only, high quality drawn steel pipe heating coils are used in our thermal oil heated tanks
- ◆ High quality bitumen pumps, valves and equipment are available in our installations.
- ◆ Optional; thermostatic control system can be added to the tanks.
- ◆ Optional; the weighing system with loadcell allows precise weighing of materials in the tank.
- ◆ Optional; maximum-minimum or continuous level sensors.

mixFALT

PE & PMB Mixing Systems (Low Shear)

TEKFALT mixFALT is a versatile mixing system that offers functional flexibility with wide variety of options for different applications and especially designed for bitumen modifications with additives which does not necessitates mill processing such as Elvaloy and powder SBS, etc.



- ◆ Precise weighing of the material in the tank with loadcell option.
- ◆ Easy filling of the additive material from the manholes or loading points thanks to walking paths above the tank.
- ◆ Solid or fluid additive feeding hoppers and manual – automatic dosing systems according to the application.
- ◆ High agitating capability thanks to flexible number of agitators and motor power.
- ◆ High quality bitumen pumps, valves and equipment in tank installations.
- ◆ Optional; thermostatic control system for tanks.
- ◆ Optional; maximum-minimum or continuous level sensors.



heatFALT

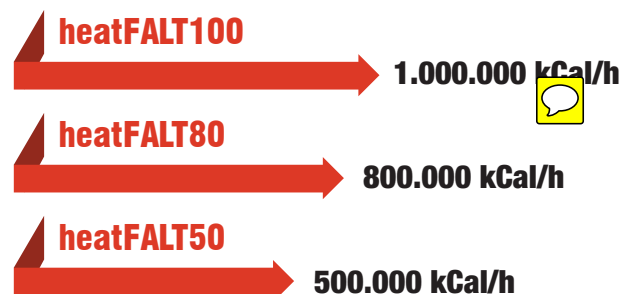
Thermal Oil Heater

MARINI heatFALT Thermal Oil Heater is an indispensable part of your asphalt plants and bitumen handling systems with its high efficiency, compact design, ease of use and low fuel consumption.



- ◆ Engineered to work at closed loop thermal oil heating systems under atmospheric pressure where oil heated up to 250°C and circulated with pump.
- ◆ Double helix heating coil design ensures long term operation and quality without any thermal cracking of the oil.
- ◆ Suitable for all types of commercial burners such as diesel, fuel-oil, natural gas and combi with the large combustion chamber.
- ◆ Burner can be replaced without any need for cable connection, thanks to its plug-in-socket design.
- ◆ Long term operation with high capacity ALLWEILLER brand thermal oil circulation pumps.
- ◆ Safe operations via digital thermostatic controller for controlling oil temperature at oil inlet and outlet.

- ◆ Flow and pressure safety with differential pressurestat at oil inlet and outlet pipes.
- ◆ Compact design ensures easy transportation (can fit into 20' container) and assembly.



drumFALT

Drum Melting Unit

TEKFALT drumFALT is a reliable, highly efficient, compact and environmentally friendly drum melting unit for your bitumen handling systems.



- ◆ 20 – 30 drums can be loaded according to the model.
- ◆ Also used for melting other highly viscous fluids in all standard drums.
- ◆ Thermal oil heated helical gear bitumen pump and filter integrated to the system.
- ◆ Hydraulic lifting system ensures easy and fast loading of drums.
- ◆ High capacity heating coils design ensures fast melting.
- ◆ Thanks to insulation with thick rockwool and sheet aluminum, heat loss is minimized.
- ◆ Optional; uninterrupted operation with level indicator system.

- ◆ drumFALT also has an integrated configuration with thermal oil heater, heatFALT, which both positioned on a single chassis and can be transferred with 40' Open Top container.

drumFALT30

3 x 10 = 30 drum capacity.
6-9 t/h capacity according to ambient conditions.
Transport via 1 x 40' Flat Rack container or 1 standard trailer.

30 drums

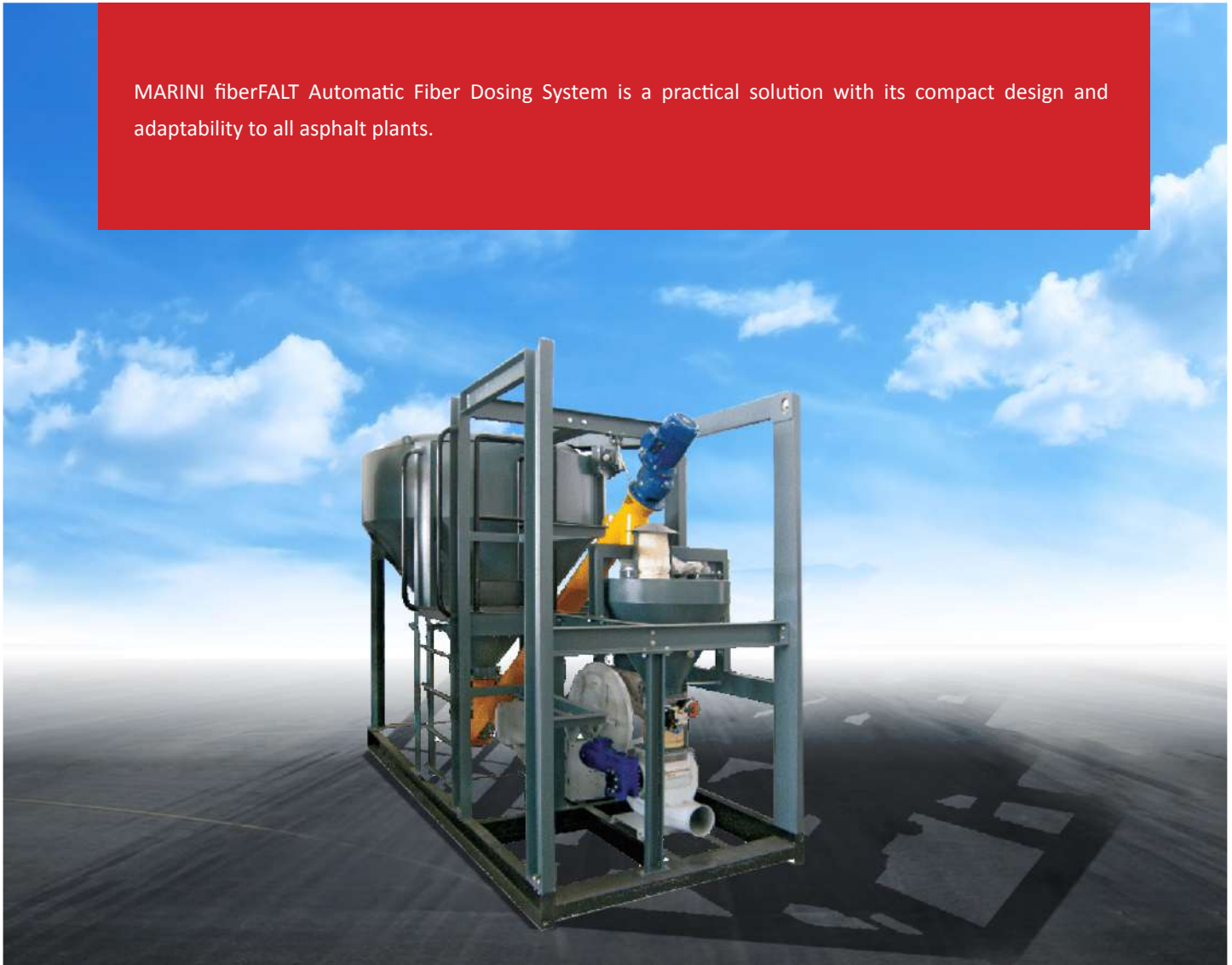
drumFALT20

2 x 10 = 20 drum capacity.
4-5 t/h capacity according to ambient conditions.
Transport via 1 x 40' Open Top container or 1 standard trailer.

20 drums

Automatic Fiber Dosing System

MARINI fiberFALT Automatic Fiber Dosing System is a practical solution with its compact design and adaptability to all asphalt plants.



- ◆ A very practical dosing system which must be used in Stone Mastic Asphalt (SMA) production for high quality roads.
- ◆ Compact design allows easy adaptation and usage for all asphalt plants.
- ◆ Its precise weighing system embedded in a durable chassis, therefore unaffected by plant vibrations.

mobilFALT

Mobile Bitumen Tank & Park

MARINI mobile bitumen stocking systems are the ideal solution for the mobile asphalt plants and other special applications.

Specially designed mobile bitumen park is integrated with 60m³ capacity bitumen tank and 400.000kCal/h capacity thermal oil heater and can be transferred smoothly thanks to its dimensions which allows it to fit exactly on a standard mega trailer. A mobile bitumen stock tank for extra bitumen stock without thermal oil heater configuration is also available. Optionally, there is a double compartment mobile tank configuration that can stock bitumen and fuel at once (diesel, fuel-oil etc.) is available for production.



- ◆ mobilFALT can fit into standard mega trailer with its compact design.
- ◆ 60m³ capacity bitumen tank according to the customer request.
- ◆ 400.000kCal/h capacity integrated thermal oil heater according to the customer demand.
- ◆ Flex pipe connections between tanks for maximum mobility at the worksite.
- ◆ 3-way bitumen valve for asphalt plant bitumen circulation pump and weighing bitumen.
- ◆ Two piece 3-way bitumen valves and embedded type bitumen pump which are integrated with tank allows:
 - ◆ Receiving bitumen from the bitumen tanker.
 - ◆ Bidirectional bitumen transfer between tanks.
 - ◆ Bitumen tanker loading from the tanks.
 - ◆ Bitumen circulation in first tank for the PMB applications.

BigBag Melting Unit

MARINI bagFALT BigBag Melting Unit is a reliable, economical and practical solution whereas bitumen is supplied through big bags. Thanks to its high efficiency, compact design, and ease of use bagFALT BigBag Melting Unit will be your most useful assistant in the field.



- ◆ bagFALT, which can be heated up to 250°C with hot oil generator, is designed to meet your needs for melting and using highly viscous products that stored in bigbags, such as bitumen , PMB etc.
- ◆ Fast melting thanks to fast loading via 2 gates and high efficient heating with superior internal design.
- ◆ All surfaces of the bagFALT are covered with rockwool insulation to minimize heat loss.
- ◆ bagFALT can optionally be equipped with a crane to facilitate bigbag loading operations.
- ◆ The compact design of the Bigbag Melting Unit (can fit into 40' OT container) allows easy and fast transportation and installation.

TEKFALT

sprayFALT

SprayFALT Sprayer Tanker

While providing safe, rapid and high heating performance with an integrated thermal oil heater, TEKFALT sprayFALT Sprayer Tanker guarantees precise, safe and easy spraying applications of bitumen and bitumen emulsions. Thermal oil circulation in the system eliminates the necessity of cleaning the system and prevents clogging, and freezing of materials in spray bars, bitumen pumps, valves and piping system.



- ◆ Bitumen/emulsion tank capacity is flexible that depends on vehicle dimensions.
- ◆ Long lasting, trouble-free usage period with an integrated high quality thermal oil heater, bitumen pump, valves and equipment.
- ◆ Capacity adjustable bitumen pump, driven by the hydraulic motor that coupled with a variable displacement hydraulic pump connected to vehicle PTO .
- ◆ Foldable and height adjustable thermal oil heated spray bars ensures accurate and sensitive spraying.
- ◆ Sensitive and proportional spraying with specially designed spray bar and spray nozzles.
- ◆ Fully circulated spray bar ensures the material is equally distributed from both sides of the spray bar to assure perfect homogeneity.
- ◆ With the 7" LCD display control unit in the drivers cabin, vehicle speed, pump flow rate and amount sprayed can be easily tracked and operation parameters can be easily adjusted.
- ◆ Full automatic dosing system adjusts the required amount sprayed as l/m^2 (liter per square meter) independent of the truck speed and spraying width.
- ◆ Optional; High-pressure diesel burners in the range of 14-26 kg/h.
- ◆ Optional; External diesel engine for vehicles without PTO.

TEKFALT basFALT

Binding Agent Spreader

TEKFALT basFALT Binding Agent Spreader is a well-designed and reliable machine that you need for surface stabilization. Thanks to its automatic control system, this mobile spreader ensures that the filler, cement, lime etc. like powder materials spread on the surfaces at desired ratios. Its functional design guarantees the best spreading performance as well as easy usage.



- ◆ Spreader consist of 3 spreading feeders which can be separately operated, allows users to work with different spreading widths.
- ◆ Proportional control system provides automatic capacity control (lt/m²) for spreading operation independent from vehicle speed and spreading width.
- ◆ Material filling with bulk cement trailers or optional filling with bigbags.
- ◆ Water-proof and damp-proof design prevents dampness of the material in the tank.
- ◆ Easy and user friendly operation with specially developed 7" LCD screen operators panel.



TEKFALT

transFALT

Bitumen Relay Tanker

TEKFALT transFALT Bitumen Relay Tanker is the most versatile and functional solution with its various capacities according to your requirements and optional heating and pumping systems, for hauling bitumen, PMB, emulsion and other similar materials.



- ◆ Tank capacity from 20.000 liter up to 40.000 liter depending on vehicle dimensions.
- ◆ Depends on request, different types of relay tankers with pump and burner are available.
- ◆ For easy filling, dual manhole option on front and back of tank and special heat resistant ball type discharge valve for pumpless models.
- ◆ In pump integrated transFALT models, by the virtue of a 4-way valve, bidirectional discharge, tank filling and circulation within the tank made possible. Additionally, economic piping cleaning is available.
- ◆ Diesel burner with thermostatic control system (capacity between 14-26 kwh) for heated types of relay tanker.
- ◆ Optional; agitator system for PMB transfers.
- ◆ Optional; Compatible design with surface stabilizers such an Bomag MPH.

TEKFALT crackFALT

Crack Repair Compound Boiler

TEKFALT crackFALT is the reliable solution for all crack repair projects of road, railway and airport with its high performance, ease of use, affordability and compact design. crackFALT can meet all the needs of projects with all scale and characteristics with 300 & 500 liter capacity and various equipment options.



- ◆ Mastic melting tankers with 500 liter capacity.
- ◆ Heating system alternatives for mastic tanks with burner direct heating or thermal oil heating.
- ◆ Rapid melting grid is located on the inlet of thermal oil heated mastic tanks.
- ◆ Speed regulated agitators for mastic melting tank with hydraulic motor drive.
- ◆ Single or double axle chassis depends on capacity.
- ◆ Smooth and fast operation with thermal oil heated lance.
- ◆ Heated lance design which can do both smoothing and injection.
- ◆ In addition to unloading the lance with bidirectional bitumen pump, cleaning of the lance and its circulation pipe by compressed air and diesel is also possible with optional equipment.

TEKFALT

patchFALT

Asphalt Maintenance Vehicle

TEKFALT patchFALT Asphalt Maintenance Vehicle is used for repairs & maintenance of roads. Optional feeding screw increases production capacity during operation with practicality it provides. patchFALT is flexible, easy to use and a reliable solution for road patching and crack filling applications with its wide range of options.



- ◆ Long-lasting and compact design with optionally heated silo which is isolated, v-shaped, hydraulic gated and in different capacities that vary according to vehicle dimensions.
- ◆ Continuous material feeding with capacity controlled material flow and hydraulic screw system with adjustable speed.
- ◆ Optionally; manual emulsion / bitumen spraying system with hand lance can be added.
- ◆ High quality hydraulic system, screws and equipment ensure trouble free and long term operation.
- ◆ Customizable configuration with small equipment that can be added on request.
- ◆ Optional; thermal oil or direct burner heating system.

TEKFALT

combiFALT

Combi Asphalt Machine

TEKFALT combiFALT Combi Asphalt Machine is combination of asphalt distributor, hydrostatic road sweeper and water sprayer. It is easy to use with a single control panel from driver cabin. The integration of different applications into one machine enables you to save considerable amount of initial investment and operation costs.

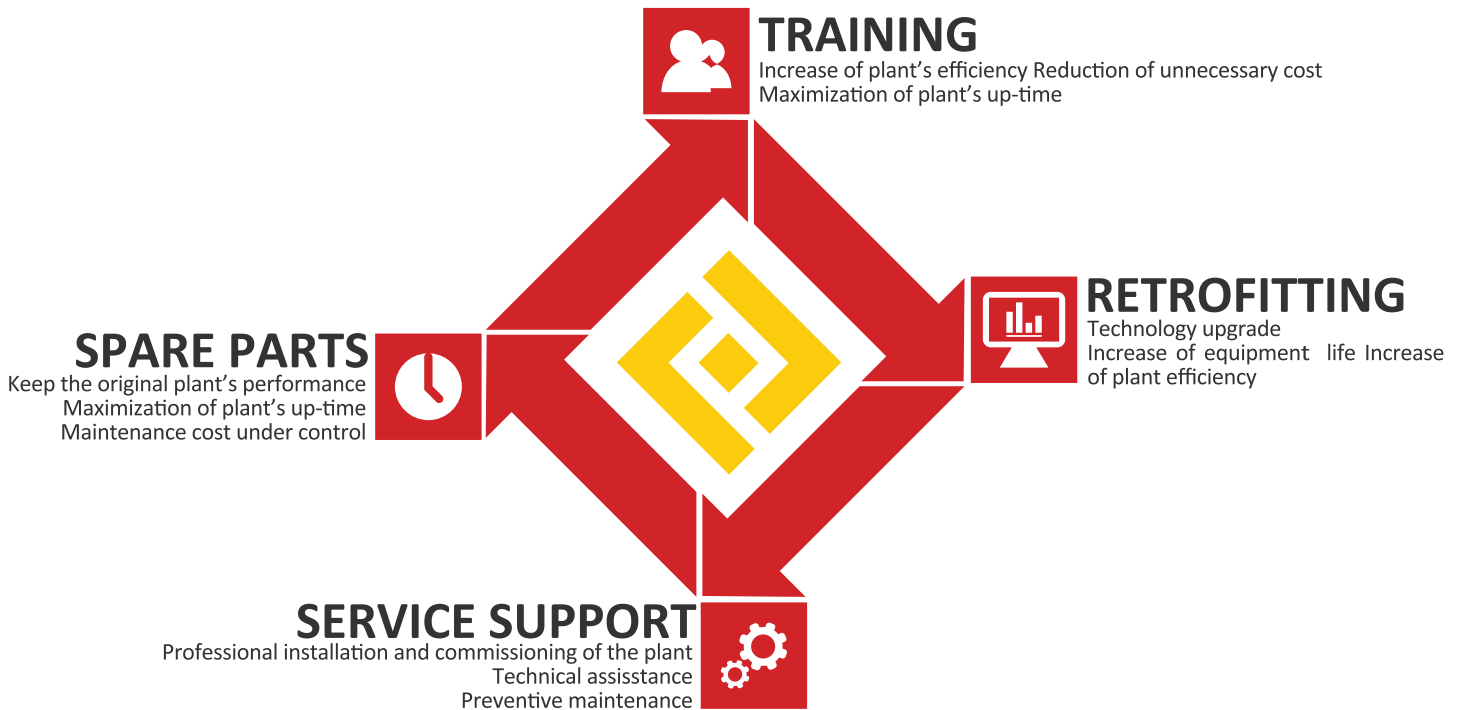


- ◆ Distributor spraying capacity, vehicle speed, pump flow rate, sweeping speed, water pump capacity and other variables can be traced and regulated from the control panel in the driver cabin.
- ◆ Emulsion and water tank capacity vary according to vehicle dimensions.
- ◆ Optimized design for daily emulsion consumption of hot mix asphalt applications.
- ◆ All options for the asphalt distributor are also available.
- ◆ Front and rear water sprayer.
- ◆ Integrated pump and hose for daily water needs of cylinders, wobble wheel roller and mills used in hot mix asphalt applications.

After Sales Services

MARINI Makina offers its customers the experience and professionalism of a team of experts, capable of offering consultancy and finding solutions regarding retrofitting, service, spare parts, training.

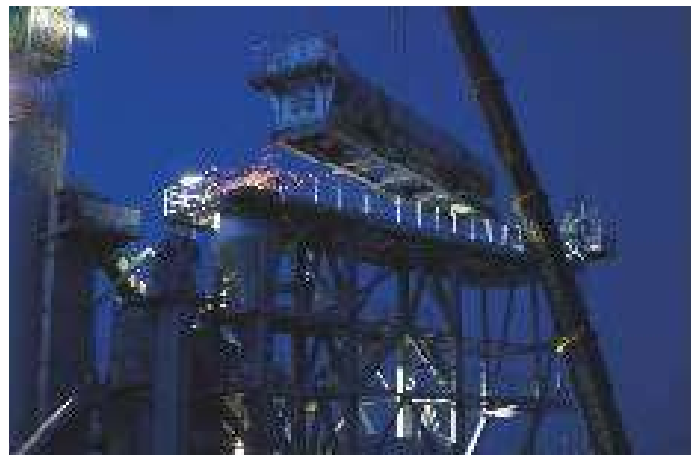
- ◆ Renovate your current machines with the integration of new components.
- ◆ Improve machine efficiency.
- ◆ Increase machine capacity.
- ◆ Bring the plant up to current emission and eco-standards.
- ◆ Integration of recycling systems and other applications.
- ◆ Implement modern technologies for warm mix asphalt.
- ◆ Integration of stone mastic asphalt production.



Service

New technical solutions to existing plants, replacement of obsolete technologies, new life to parts needing replacement, upgrade to improve and complete the asphalt plant to give it a new lease of industrial life: this is the target of retrofitting.

Together with our team of experts, customers can identify the best solutions to achieve reliability and quick return on investment.



Service

Expertise and professionalism of the MARINI team is the core of service, perfectly integrated in our CUSTOMER SUPPORT program, with the aim of creating an ongoing relationship of excellence.

We provide support with prompt efficiency, competence and knowledge support to the customers' plants all over the world.



Spare Parts

Thanks to the experience accumulated over many years and the expertise of its staff, MARINI MAKINA is in a position to meet the requirements of all customers.

The company can trace and supply spare parts and other equipment also for plants which are out-of-production and when this is not possible our experts can always provide the best alternative technical solutions.

Remember only genuine original MARINI and TEKFAIT spare parts and accessories guarantee reliability and high performance to your asphalt plant.



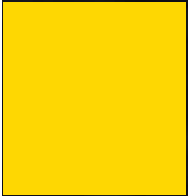
Training

Well prepared and competent staff guarantee the productivity and reliability of the plant. This is why we have designed a package of four different training programs, implemented in the new Training Academy or directly on site.

Marini Training Programs:

- ◆ A basic course for operators.
- ◆ How to manage and run the burner.
- ◆ How to maintain the machines
- ◆ Control system trainings.






MARINI
FAYAT GROUP



**EXPORT
NETWORK**

TEKFALT

IS A BRAND OF MARINI MAKINA A.S.

- 
- ❖ Export to 66 Countries
 - ❖ 25.000m² Production Area
 - ❖ More Than 200 Employees

TEKFALT

IS A BRAND OF MARINI MAKINA A.S.





MARINI
FAYAT GROUP



TEKFALT

IS A BRAND OF MARINI MAKINA A.S.

1. OSB Kırım Hanlığı Caddesi No:1

06935 Sincan - Ankara / TURKEY

Tel: +90 (312) 386 33 22

Fax: +90 (312) 386 33 23

info@tekfalt.com.tr

www.tekfalt.com.tr

Coordinates: 39,967166 / 32,552128

