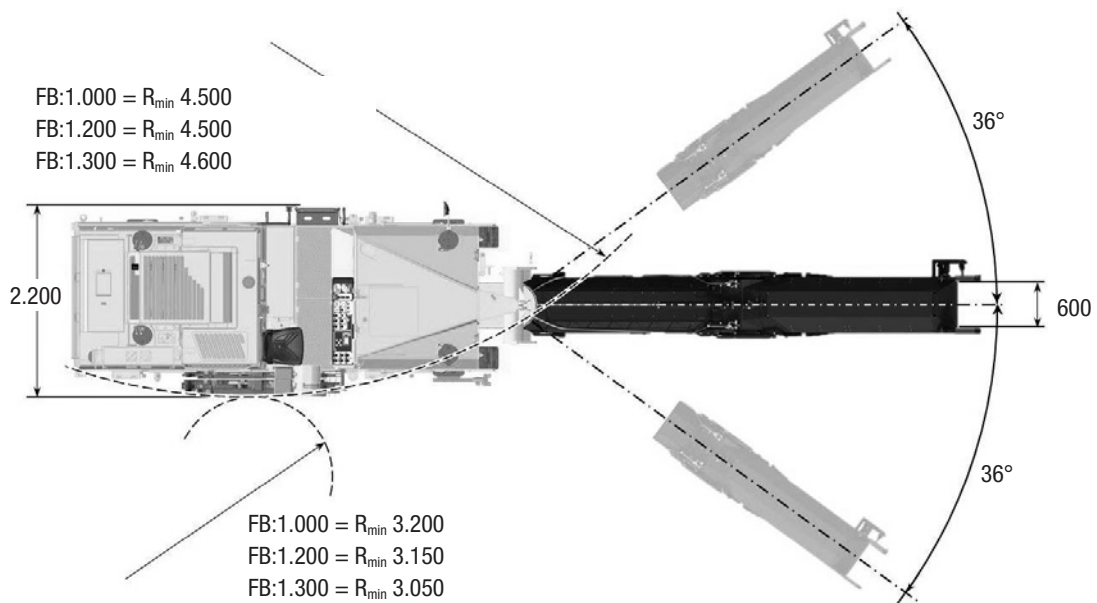
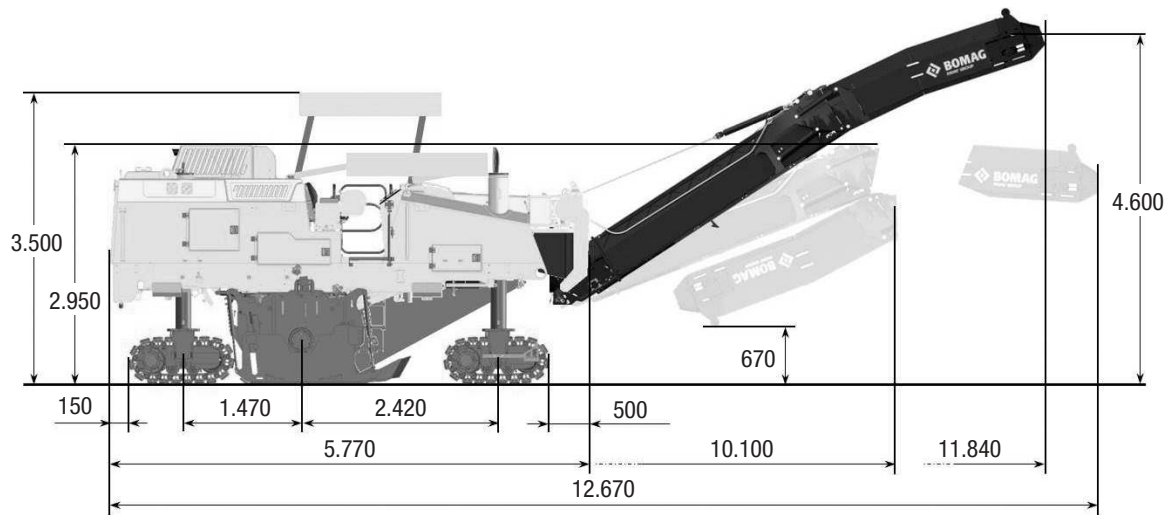


TECHNICAL DATA

COLD PLANER

BM 1000/30, BM 1200/30, BM 1300/30 TIER 3





BM 1000/30

calculated for asphalt of average hardness	4	8	12	16	24	32
Rate of advance V (m/min)	18 - 24	12 - 16	9 - 12	6,5 - 9	3,5 - 5	2 - 3
Area output Ft (m ² /h) (Theoretical)	1100 - 1450	700 - 1000	550 - 700	400 - 550	200 - 300	120 - 200
Milling volume Qt (m ³ /h) (Theoretical)	44 - 58	56 - 80	66 - 84	64 - 88	48 - 72	39 - 64

BM 1200/30

calculated for asphalt of average hardness	4	8	12	16	24	32
Rate of advance V (m/min)	15 - 20	10 - 13	7 - 10	5,5 - 7,5	2,5 - 4,5	1,5 - 3
Area output Ft (m ² /h) (Theoretical)	1080 - 1440	720 - 936	504 - 720	396 - 540	180 - 324	108 - 216
Milling volume Qt (m ³ /h) (Theoretical)	43 - 57	57 - 75	60 - 86	63 - 86	43 - 77	34 - 69

BM 1300/30

calculated for asphalt of average hardness	4	8	12	16	24	32
Rate of advance V (m/min)	13 - 19	9 - 12	7 - 9	5 - 7	2,5 - 4	1 - 2,5
Area output Ft (m ² /h) (Theoretical)	1000 - 1450	700 - 950	550 - 700	400 - 550	200 - 300	80 - 200
Milling volume Qt (m ³ /h) (Theoretical)	42 - 58	56 - 76	66 - 84	64 - 88	48 - 72	26 - 64

The following factors greatly influence performance when the equipment is employed practically: Different milling material, waiting for lorries, traffic hold-ups, road installations such as manhole covers, hydrants, etc.

Technical Data

Milling Drum

	BOMAG BM 1000/30	BOMAG BM 1200/30	BOMAG BM 1300/30
Milling width max	1.000	1.200	1.300
Milling depth	0 – 320	0 – 320	0 – 320
Milling line space	15	15	15
Cutting diameter	980	980	980
No. of Tools	99	115	121
Milling Drum Speed	111	111	111

Drive

Engine Manufacturer	CAT	CAT	CAT
Type	C7.1 ACERT	C7.1 ACERT	C7.1 ACERT
Emission standards	3 / 3a	3 / 3a1	3 / 3a
Cooling	Liquid cooled	Liquid cooled	Liquid cooled
No. of cylinders / Displacement	6 / 7.000	6 / 7.000	6 / 7.000
Power	205 / 280	205 / 280	205 / 280
Engine Speed	2.200	2.200	2.200
Peak Torque	1.050	1.050	1.050
Consumption at max. Torque	212	212	212
Consumption at rated Power	231	231	231
Consumption at Job-mix	26	26	26
Generator	24	24	24
Battery	2 x 12 / 132	2 x 12 / 132	2 x 12 / 132

Driving Characteristics

Transport-speed	0 – 6	0 – 6	0 – 6
Operating-speed	0 – 28	0 – 28	0 – 28
Crawler size L x W x H	1.275 x 268 x 570	1.275 x 268 x 570	1.275 x 268 x 570

Capacities

Fuel	450	450	450
Water	1.250	1.250	1.250
Hydraulic	130	130	130

Loading-system

Conveyor width, inside / outside	600 / 600	600 / 600	600 / 600
Theoretical capacity	170	170	170
Discharge height	4.600	4.600	4.600

Weights

Max. Operating weight (incl. Options)	19.700	20.050	20.250
Operating weight CE	18.850	19.200	19.400
Basic weight	18.380	18.730	18.930

Additional weights for Options

Weather protection roof	150	150	150
Fine-milling-drum LA8	300	300	300

Technical modifications reserved. Machines may be shown with options.

Standard

Milling technology

- Milling Drum LA15
- BOMAG BMS 15 exchangeable toolholder
- Proportional adjustable water injection
- Levelling, 2 sides + slope
- Hydraulically operated side-plates
- Hydraulically operated front mouldboard
- Rear mouldboard with adjustable pre-load-pressure
- Automatic load-control
- Automatic distribution of traction
- Hydraulically foldable Conveyor

Drive Systems

- 4-Crawlers
- 4 crawler steerable, front or/and rear
- Crabwalk
- Automatic distribution of traction
- Variable transport speed
- Variable operating speed
- Mechanical Drum-drive

Operation comfort

- Comfort-workstation for sitting operation
- Ergonomic side-shifting of operator seat
- Self-explanatory, well-arranged dashboards
- Ground control panels
- Service- and maintenance-points ergonomic concentrated

Safety & environmental protection

- Liquid cooled engine following latest emission rules
- SCR-Cat with Add-blue
- Whisper-package for noise elimination
- Variable placeable working-lights
- Rotary-beacon
- Mirrors

- Safety-package with emergency-stop-switches
- Back-up-alarm
- Vandalism protection

Optional

Basic machine

- Weather protection roof
- Water filling pump
- High pressure cleaner
- compressed air system
- Road lights
- Special colour
- Biodegradable hydraulic oil

Milling technology

- Milling-Drum 1000, BMS15, LA15
- Milling-Drum 1200, BMS15, LA15
- Milling-Drum 1300, BMS15, LA15
- Fine-Milling-Drum 1000, BMS15, LA8
- Fine-Milling-Drum 1200, BMS15, LA8
- Fine-Milling-Drum 1300, BMS15, LA8
- POWER DRUM 1000, BMS15, LA22
- POWER DRUM 1200, BMS15, LA22
- POWER DRUM 1300, BMS15, LA22

Levelling Systems and electronic support

- BOMAG TELEMATIC

